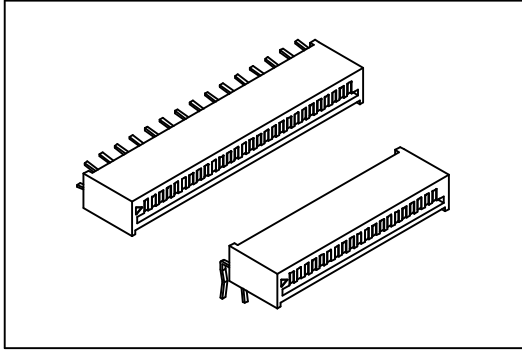


2532 SERIES

FFC/FPC CONNECTOR 1.25mm(0.049") NON ZIF TYPE



Material:

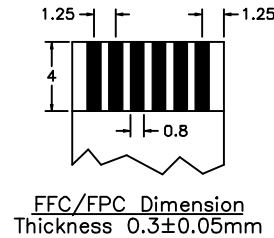
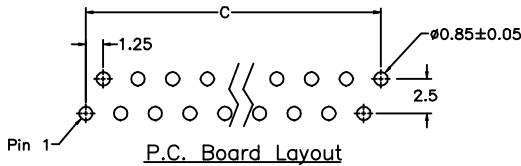
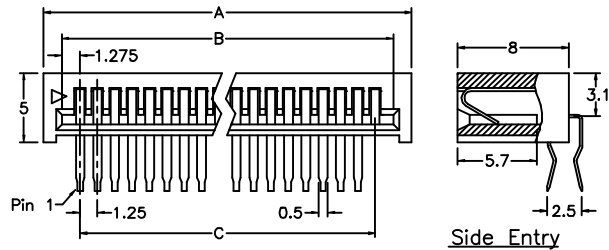
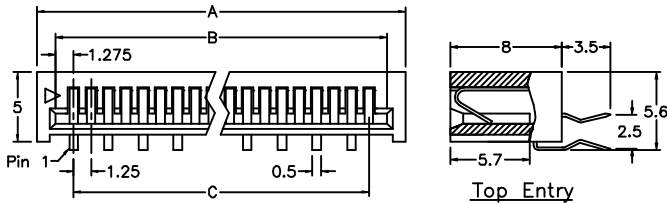
Housing: 30% Glass filled PBT UL94V-0.
 Contacts: Phosphor Bronze.
 Plating: Tin plated.

Electrical Characteristics:

Current Rating: 1 AMP.
 Insulator Resistance: 5000M Ω min. at DC 500V.
 Contact Resistance: 20m Ω max. at DC 100mA.
 Operating Temperature: -55°C ~+105°C.

Features:

- * Size 3 through 36 available.
- * Straight & right angle, Non-ZIF.
- * For 0.30mm(0.0118") thick FFC/FPC.



Position Dimension	3 Thru 36
A	(No. of Positions X 1.25)+3.4
B	(No. of Positions X 1.25)+1.3
C	(No. of Positions X 1.25)-1.25

Ordering information

2532- 36 T S
 Series No. of T: Tin Plated S: Top Entry (Straight)
 Pin Count R: Side Entry (Right Angle)