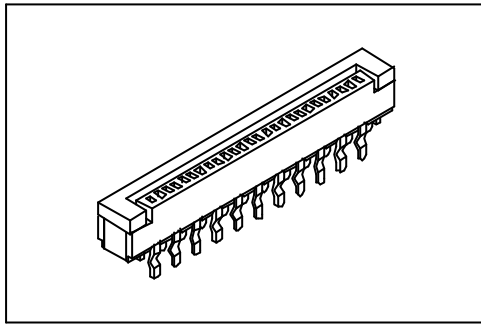


# 2434 Series

## FFC/FPC Connector 1.0mm(0.039") ZIF Type



### Features:

- \* ZIF, Straight dip type.
- \* Size 4 through 32 available.
- \* For 0.30mm(0.0118") thick FFC/FPC.

### Material:

**Housing:** High temperature housing UL94V-0 withstands IR and VPR soldering methods.

**Contacts:** Phosphor Bronze.

**Leg:** Brass

**Plating:** Tin plated.

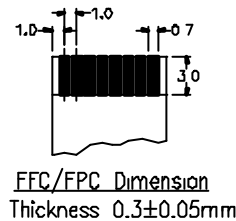
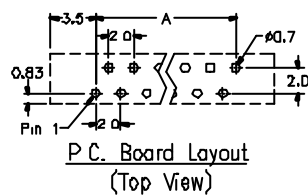
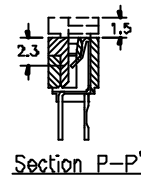
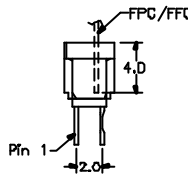
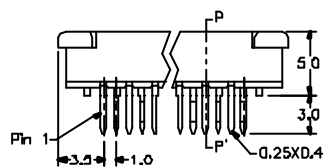
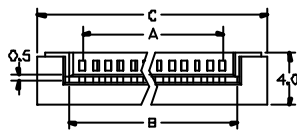
### Electrical Characteristics:

**Current Rating:** 0.5 AMP.

**Insulator Resistance:** 100MΩ min. at DC 500V.

**Contact Resistance:** 20mΩ max. at DC 100mA.

**Operating Temperature:** -55°C ~ +85°C.



Position	4 Thru 32
Dimension	
A	(No. of Positions X 1.0)-1.0
B	(No. of Positions X 1.0)+1.2
C	(No. of Positions X 1.0)+6.0

### Ordering information

2434- 32 I S  
 Series No. of Pin Count T: Tin Plated S: Straight