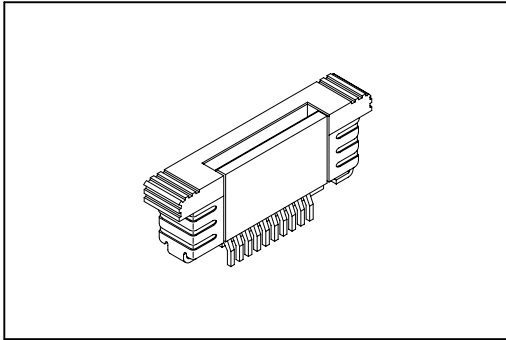


# 2345 Series

## FFC/FPC Connector 0.5mm(0.02") ZIF Type



### Material:

Housing: High temperature housing UL94V-0

Contacts: Phosphor Bronze.

Leg: Brass.

Plating: Tin plated.

### Electrical Characteristics:

Current Rating: 0.4 AMP max.

Insulator Resistance: 500MΩ min. at DC 500V.

Contact Resistance: 90mΩ max. at DC 100mA.

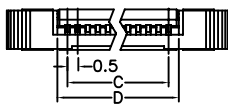
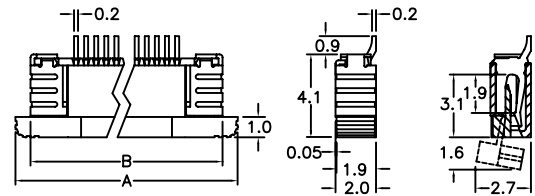
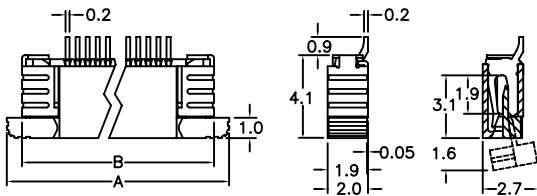
Operating Temperature: -55°C~+125°C.

### Features:

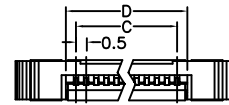
\* ZIF, Surface Mount.

\* Size 4 through 50 available.

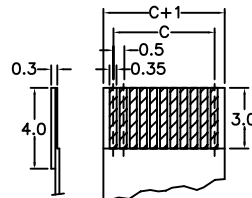
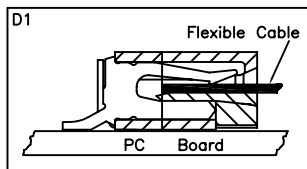
\* For 0.30mm(0.0118") thick FFC/FPC.



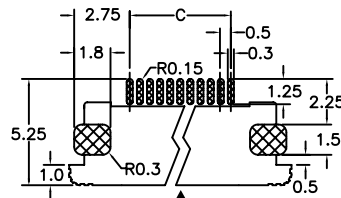
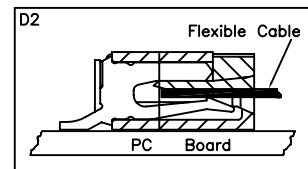
Top Contact



Bottom Contact



FFC/FPC Dimension



FPC/FFC Insert Direction  
P.C. Board Layout  
(Top View)

Position	4 Thru 50
Dimension	
A	(No. of PositionsX0.5)+5.5
B	(No. of PositionsX0.5)+4.0
C	(No. of PositionsX0.5)-0.5
D	(No. of PositionsX0.5)+0.6

## Ordering information

2345-

Series

50

No. of  
Pin Count

T

T: Tin Plated

D

D: SMD Type

1

1: Top Contact

2: Bottom Contact

T

U: Tube Package

T: Tape & Reel Package